



Myako Hotel

Introduction

Mr and Mrs. H.L.Stimson
Kyoto Hotel Visit

Most of us are not going to die
They are never born

Zambian Coup plot
that went wrong

Convergence theory

Contingency Theory

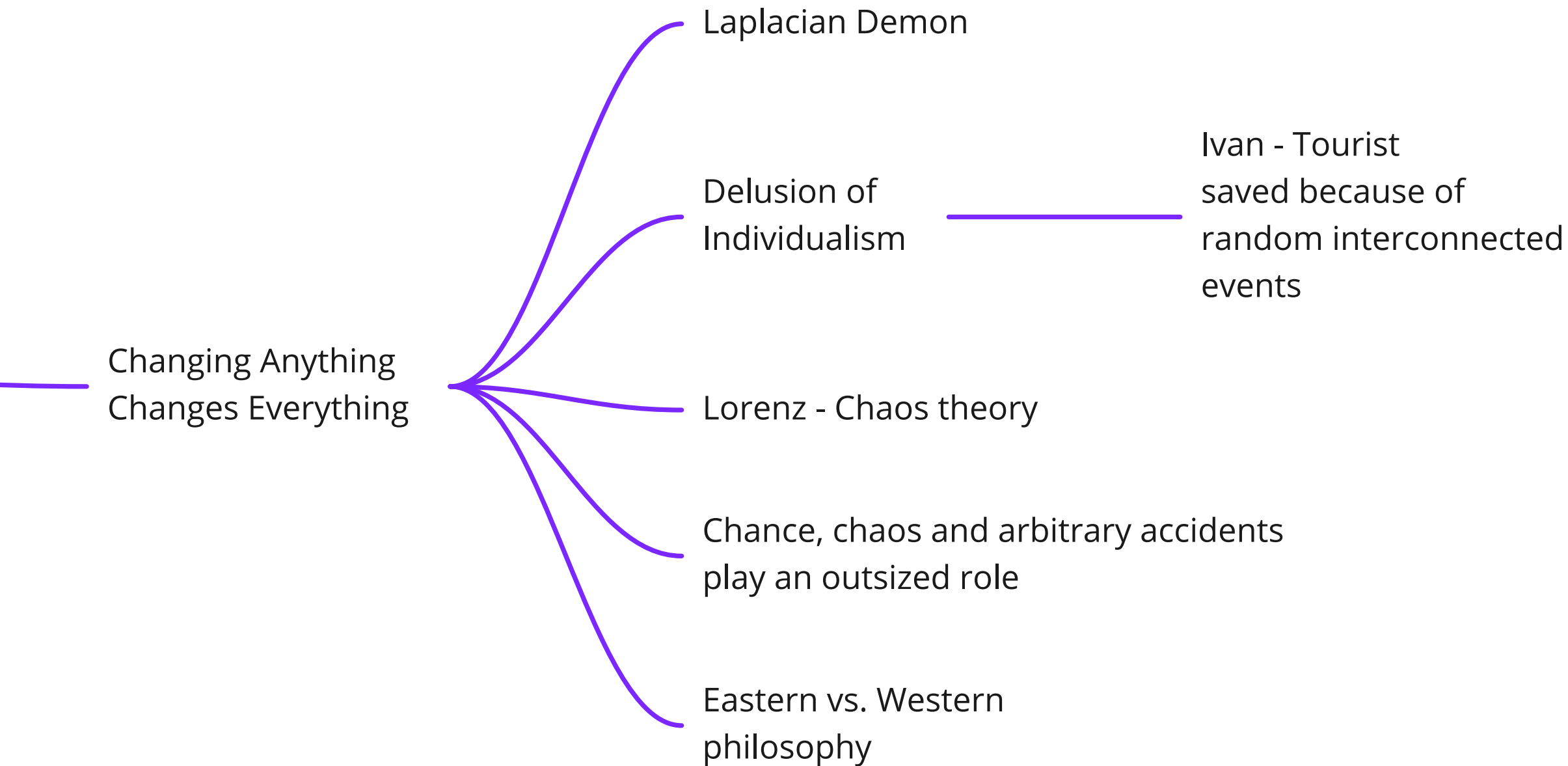
Saved Kyoto

Disaster for Nagasaki

Kokura's Luck

Every thing happens for
a reason

Stuff happens



Everything doesn't happen for a reason



Snooze button to explain contingent convergence world

Long Term Evolution Experiment in a lab

Zachary Blount

Richard Lenski

12 identical strains of E.Coli bacteria

Contingent Convergence

Humans underwent population bottleneck

10,000 to 8 Billion

To us, the world appears convergent until we realize with a jolt that it isn't

78% of new species is triggered by a single event

There is order and structure, but the snooze-button effect is real

Experimentation is the KEY

London underground workers strike

often we learn through forced changes

Why our brains distort reality

Truth Creature
vs.
Shortcut Creature

Vision

Humans - Trichromats

Dogs - Bichromats

Fishes - Tetrachromats

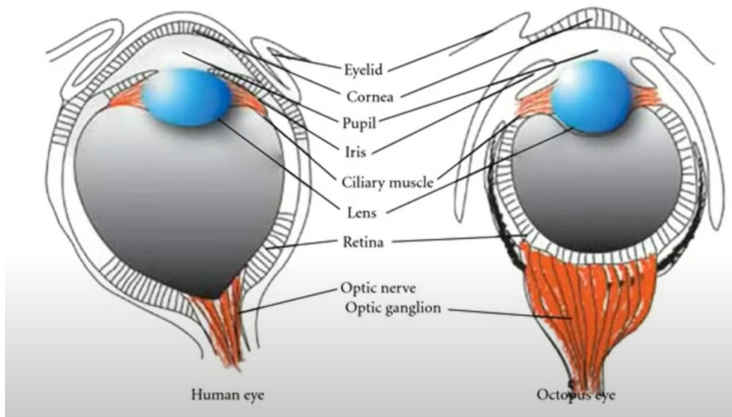
Sense of color
Contingent accidental outcome

Evolved to overdetect
patterns

Not comfortable
with chaos

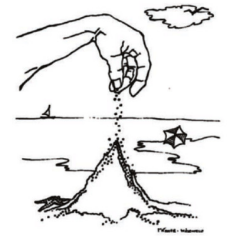
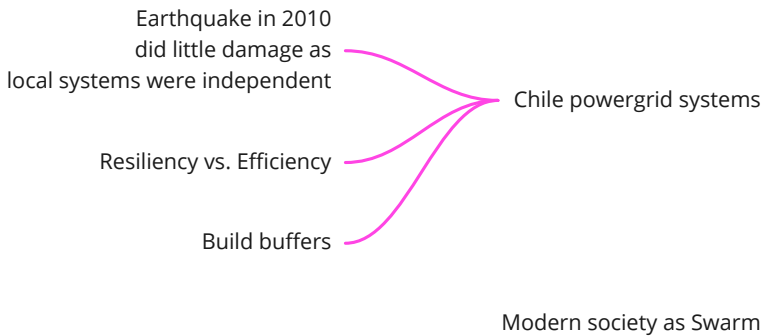
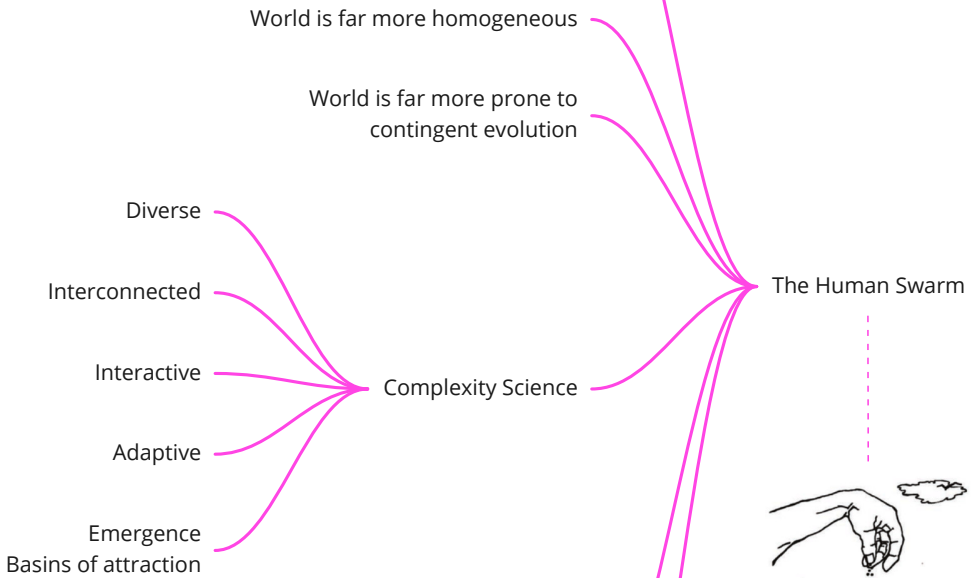
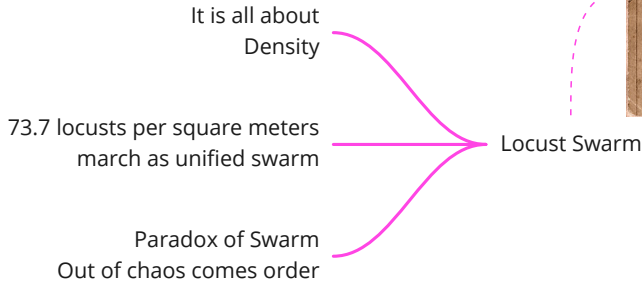
Teleological bias

Magnitude bias

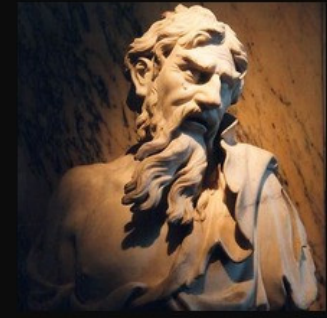


**Human's and Octopus eyes
have identical structure.
Evolutionary fluke**

1875 Locust swarm - Minnesota to Texas

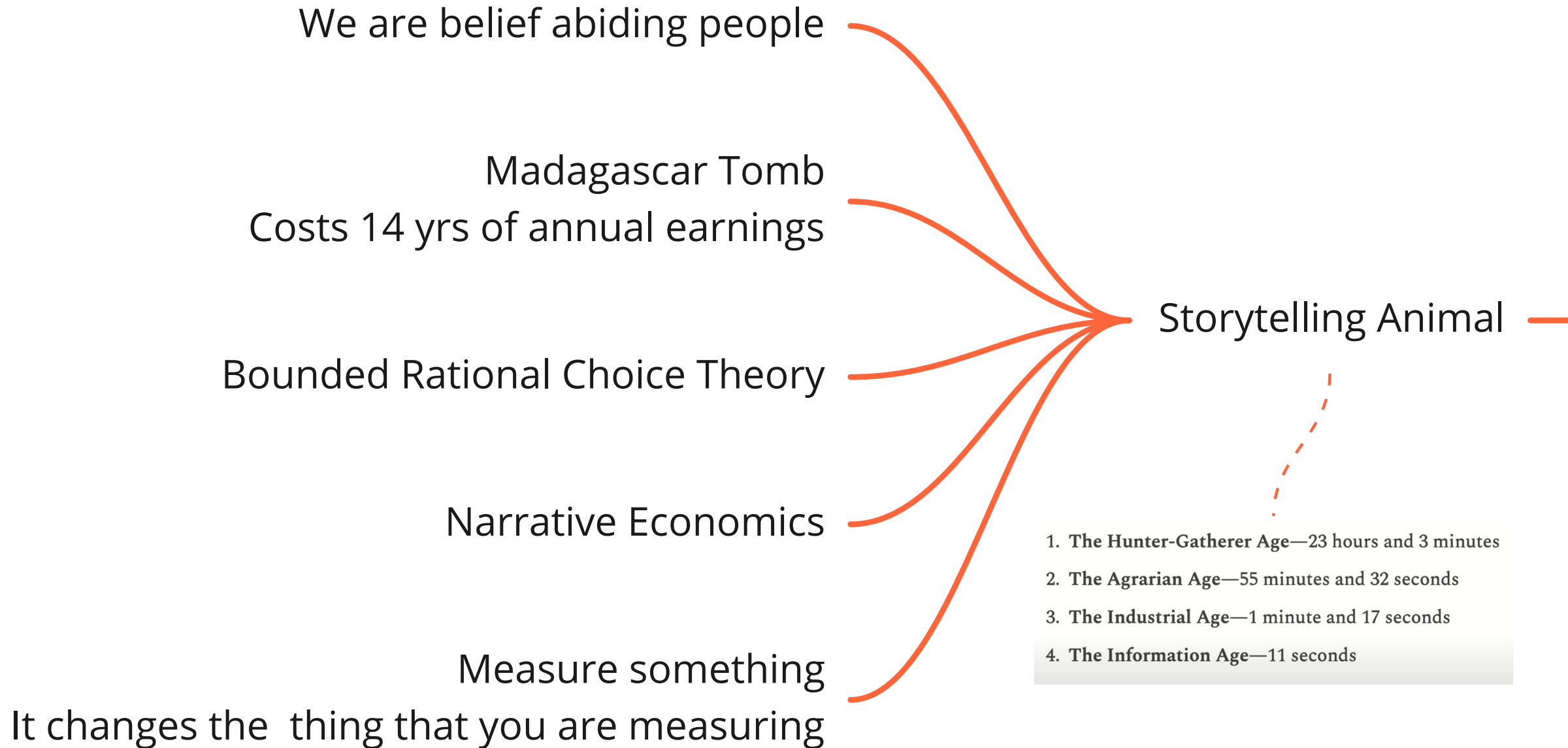


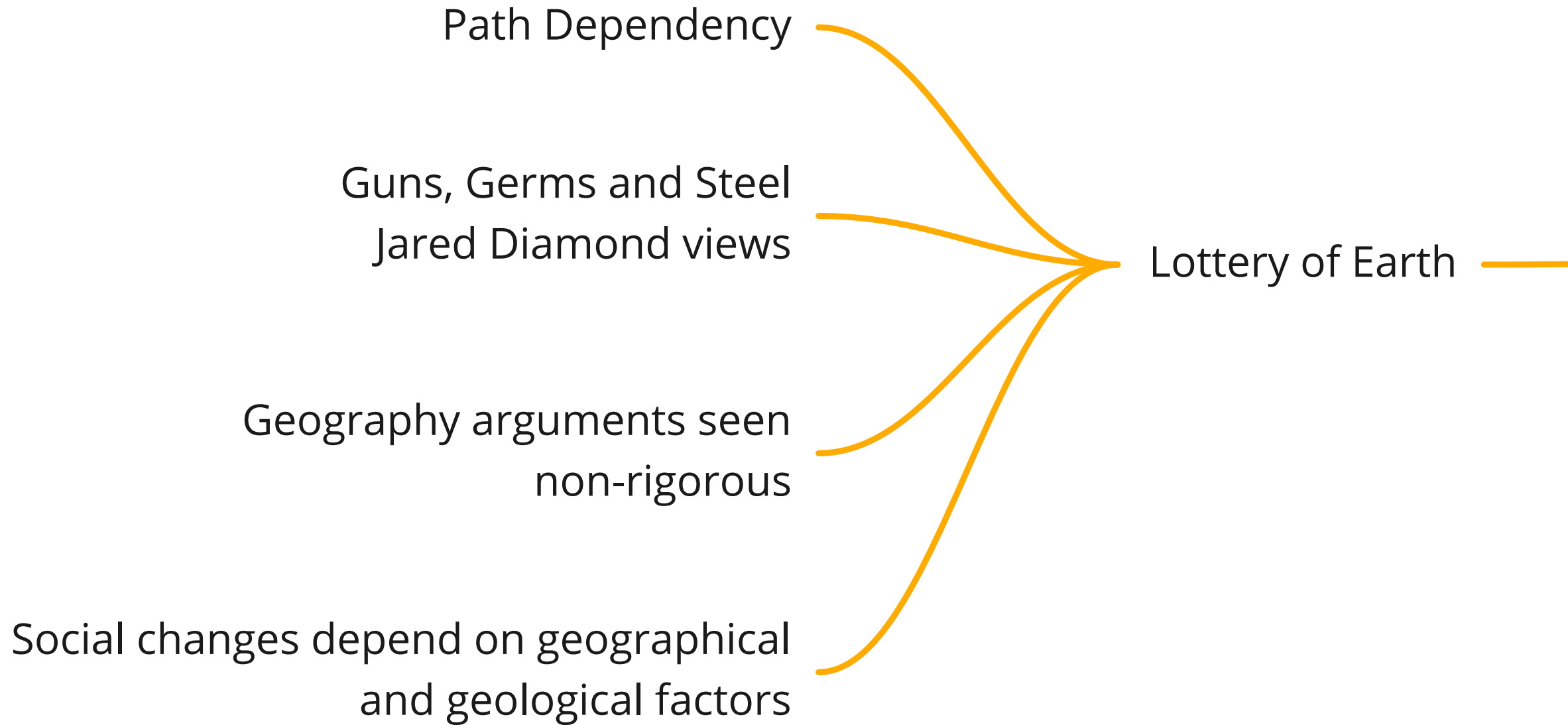
Sandpile model

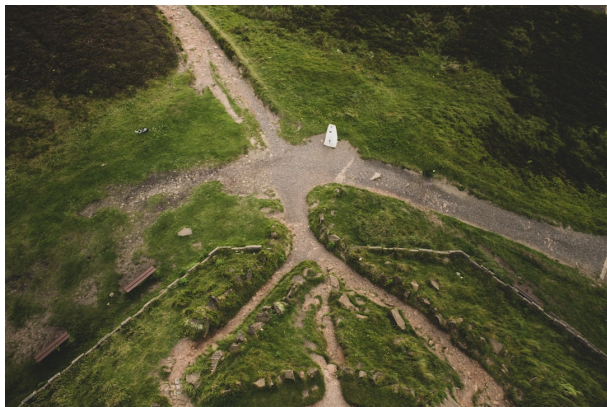


Nothing is constant except change

~ Heraclitus







each moment in our lives
is a fork of infinite possibilities

Days of the week
5 planets , Sun, Moon were visible

Development of English language

Garden of forking paths

Of Clocks and Calendars

Months in a year
contingent event

All else being equal



Wrong assumption

Does an influx of immigrants create a backlash against social spending programs, such as unemployment benefits, from voters who see them as illegitimate handouts ?



Same Data



Same Question

76 teams produced 1253 models to estimate the effect of immigration on support for social welfare programs

5% of the variation

Methodological choices



■ No Link ■ Yes ■ No

95% of the variation

Unexplained

Any variable of interest across asset classes, across latency horizons



Small group of quants

Pick your dataset



Pick your question



It's not social science vs. it's not rocket science

difficult problem
slayed

phacking

publication bias

slight change in the model

X causes Y
flukes don't matter

Simple models
lock in from slow computing era

Complexity
science
research is
missing in this
area

Easy problem

Emperor's new equations

Influx of immigrants
vs.
social spending

Hard problem

Same data
Same problem
different results

50 % inconclusive
25 % impact
25% no impact

Minute differences mattered

Trump win
Nate Silver. 30% chance

Epistemic uncertainty

Reliance on
Quantification

Truthiness, Mathiness

Fragile Families challenge

Maria Popova



To live wonder-
smitten with
reality is the
gladdest way to
live

Explore vs Exploit
mindset

Rice Crop
vs.
Rubber Crop

Storybook notions
are a lie

Reality is every swaying

greatest moment of our lives
are least efficient, prize is in just being

You are the controller

By tweaking or changing something,
world will behave in a way that you want to

Audience wanted adventure

Game became sterile

Self help books malaise

moneyballing the game

Local Stability
Global Instability

Don't obsess with
efficiency, productivity and control

Randomized experimentation
with SLACK is the way to GO

Every one ignored her work

Katalin Kariko

Why everything we do matters ?



Nobel prize winner